

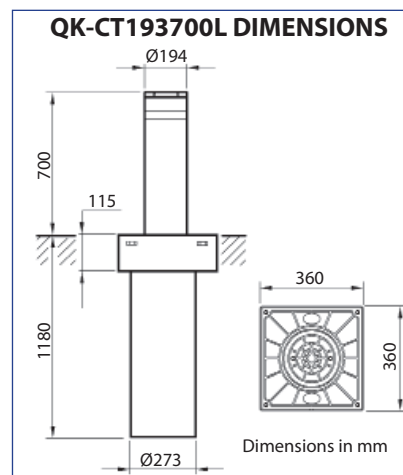
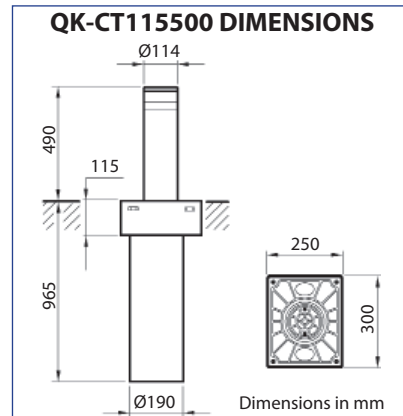
PRODUCT DATASHEET

QK-CT115500 / QK-CT193700L

Automatic electromechanical bollard

Designed in two versions for installation in spaces for collective use:

- QK-CT115500 for private context (parking space saver, access to private homes, garages, etc.)
- QK-CT193700L for collective contexts (condominiums, hotels, etc.)



• Automatic electromechanical retractable bollards for intensive use

- Actuator in permanent grease
- Break-in resistance: **60 000 J** for QK-CT115500 ; **110 000 J** for QK-CT193700L
- Impact resistance: **7 000 J** for QK-CT115500 ; **10 000 J** for QK-CT193700L
- Work time: **6.0 s** for QK-CT115500; **9.0 s** for QK-CT193700L
- Max operating frequency: up to **500 op./day**
- MCBF: **400 000 cycles**
- Electric parking brake to stem high
- Limit switches
- Rod position with magnetic sensor
- Cap with LED light for QK-CT193700L version
- It lowers manually with power cut-off
- Electrical emergency unit for maintaining high stem (optional)

REFERENCE STANDARDS

2004/108/CEE; 93/68/CEE (EN55014-1; EN55014-2) • Electromagnetic Compatibility
 2006/95/CEE; 93/68/CEE (EN60335-1(2002)) • Low voltage
 2006/42/CEE (EN60204-1) • Machinery directive
 99/5/CEE (ETSI EN 301 489-3 (2002) + ETSI EN 301 498-1 (2005); ETSI EN 300 220-2 (2006)) •

TECHNICAL-ENVIRONMENTAL MAIN FEATURES

Driven rod out of the ground	QK-CT115500: Ø114 x h.490 mm (±2mm) x th. 4mm steel Fe 360 (S 235 JR) *	QK-CT193700L: Ø194 x h.700 mm (±2mm) x th. 6mm steelFe 360 (S 235 JR) *
Buried structure	QK-CT115500: 250 x 300 x h.965mm	QK-CT193700L: 360 x 360 x h.1 180mm
Foundation	Concrete	
Excavation	QK-CT115500: 800 x 800 x h.1 200mm	QK-CT193700L: 800 x 800 x h.1 400mm
Break-in resistance	QK-CT115500: 60 000 J	QK-CT193700L: 110 000 J
Impact resistance	QK-CT115500: 7 000 J	QK-CT193700L: 10 000 J
Allowable axial static load	Bollard up max 2 500 N; bollard down max 120 000 N	
Driven rod treatment	Cataphoresis and coating RAL7031 standard, other colour on request	
Passive visibility	Reflective film H=100 mm **	
Flange	Cast iron, cataphoresis black	
Top cover	Cast iron, cataphoresis black	
Actuator	Reversible; in permanent grease	
Power	230 Vac ±10%, 50-60 Hz	
Working time	QK-CT115500: 6.0 s (50 Hz)	QK-CT193700L: 9.0 s (50 Hz)
Working temperature	-40°C *** +60°C	
Operating humidity	up to 100%	
IP grade	IP67	
Hand operation	It lowers manually with power cut-off	
Net weight	QK-CT115500: 57 kg	QK-CT193700L: 103 kg
Gross weight	QK-CT115500: 60 kg	QK-CT193700L: 115 kg

* option, AISI304 or AISI316

** Customizable (optional)

*** With integrated heater active

ELECTRICAL FEATURES

Control unit	QK-CE220CTD
Power	1-phase 230 Vac ±10%, 50-60 Hz (115 Vac with optional adapter)
IP grade	IP54
Working temperature	-40°C +60°C
Operating humidity	up to 95%, non condensing
Use	Max. 4 for each control unit. Parallel control wiring possible for driving many groups of bollards.
Power absorbed	0.20 kW for each bollard
Stopping movement	Electric brake; 24 Vdc - 20 W (sustained 12 Vdc - 5 W)
Signalling (optional)	QK-CT193700L: C ap with LEDs light
Sensors	Open passage, closed passage, antitampering switch (option)
Local/Remote control	· Digital inputs · Radio remote control

For system composition and installation refer to the regulations in force in the country where the system is being installed.

ITEM SPECIFICATION

Electromechanical bollard 230 Vac. Available in two sizes:

- Ø114 x 490 x th.4mm, driven rod out of the ground in steelFe 360 (S 235 JR). Cataphoresis and coating. Break-in resistance up to 60 000 J. Working temperature up to -40°C +60°C. Working time 6.0 s. Power 230 Vac ±10%, 50-60 Hz. With control unit suitable to control a maximum of 4 bollards simultaneously. Power absorbed 0.20 kW for each bollard. Electric brake 24 Vdc - 20 W (sustained 12 Vdc - 5 W). Rod position sensor with magnetic sensor. Limit switches. It lowers manually with power cut-off.

- Ø194 x 700 x th.6mm, driven rod out of the ground in steelFe 360 (S 235 JR). Cataphoresis and coating. Break-in resistance up to 110 000 J. Working temperature up to -40°C +60°C. Working time 9.0 s. Power 230 Vac ±10%, 50-60 Hz. With control unit suitable to control a maximum of 4 bollards simultaneously. Power absorbed 0.20 kW for each bollard. LEDs light on the cap. Electric brake 24 Vdc - 20 W (sustained 12 Vdc - 5 W). Rod position sensor with magnetic sensor. Limit switches. It lowers manually with power cut-off.

Quiko Italy

Via Seccalegno, 19
36040 Sossano (VI) - Italy
Tel. +39 0444 785513
Fax +39 0444 782371
info@quikoitaly.com
www.quikoitaly.com



MADE IN ITALY

